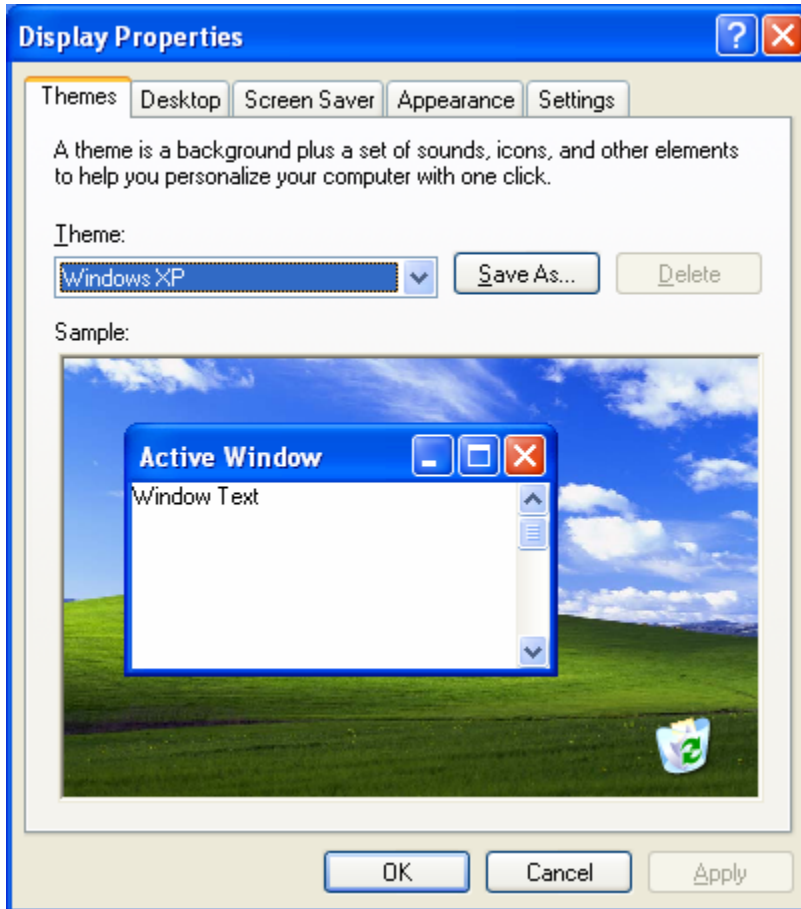
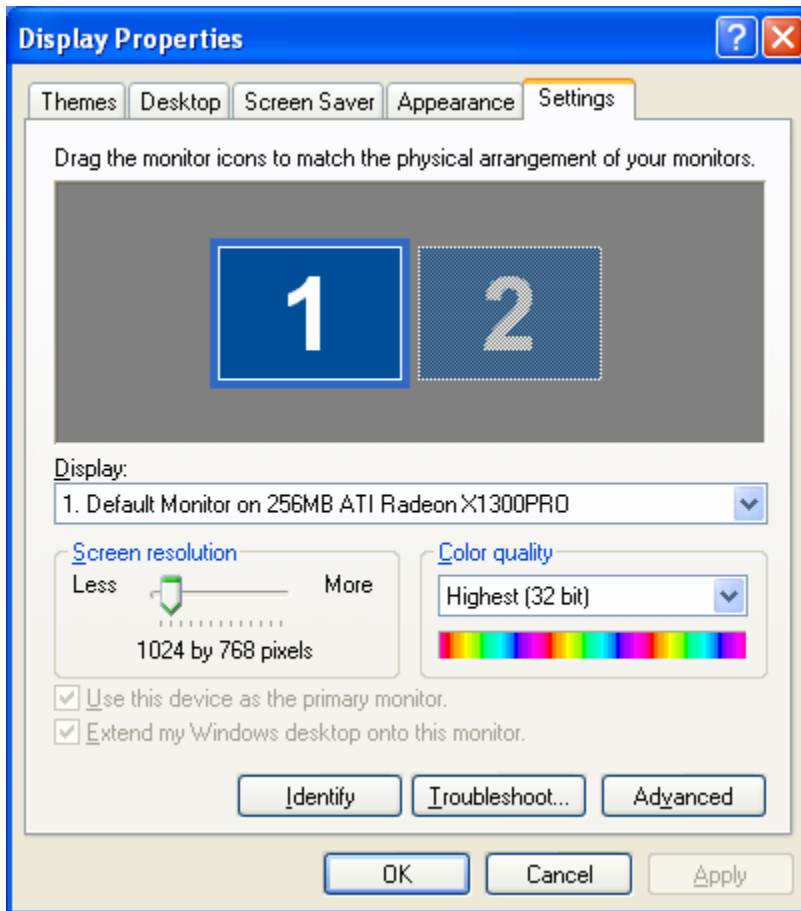


You must connect your projector to monitor port 2 and power it on prior to doing this setup.

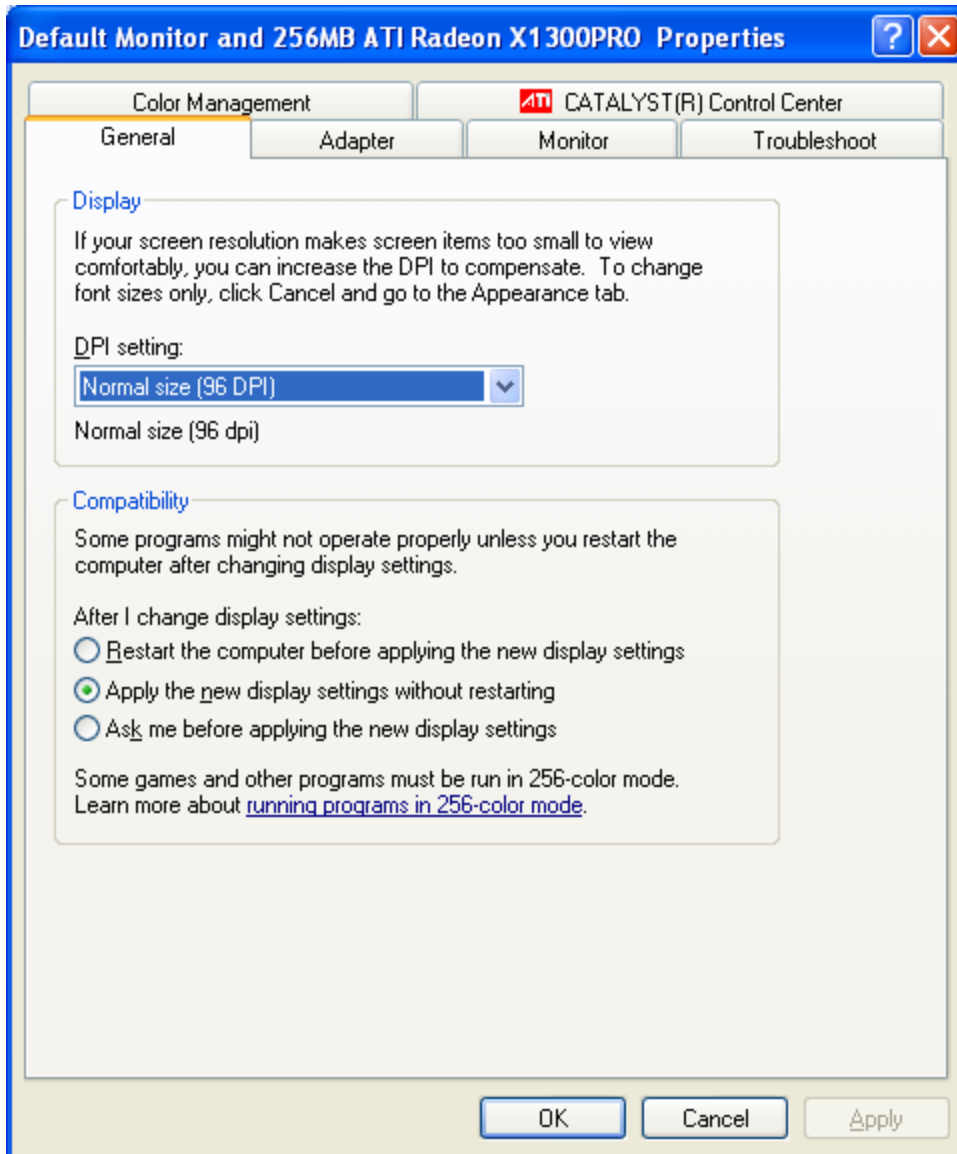
Right click on the desktop and select properties.



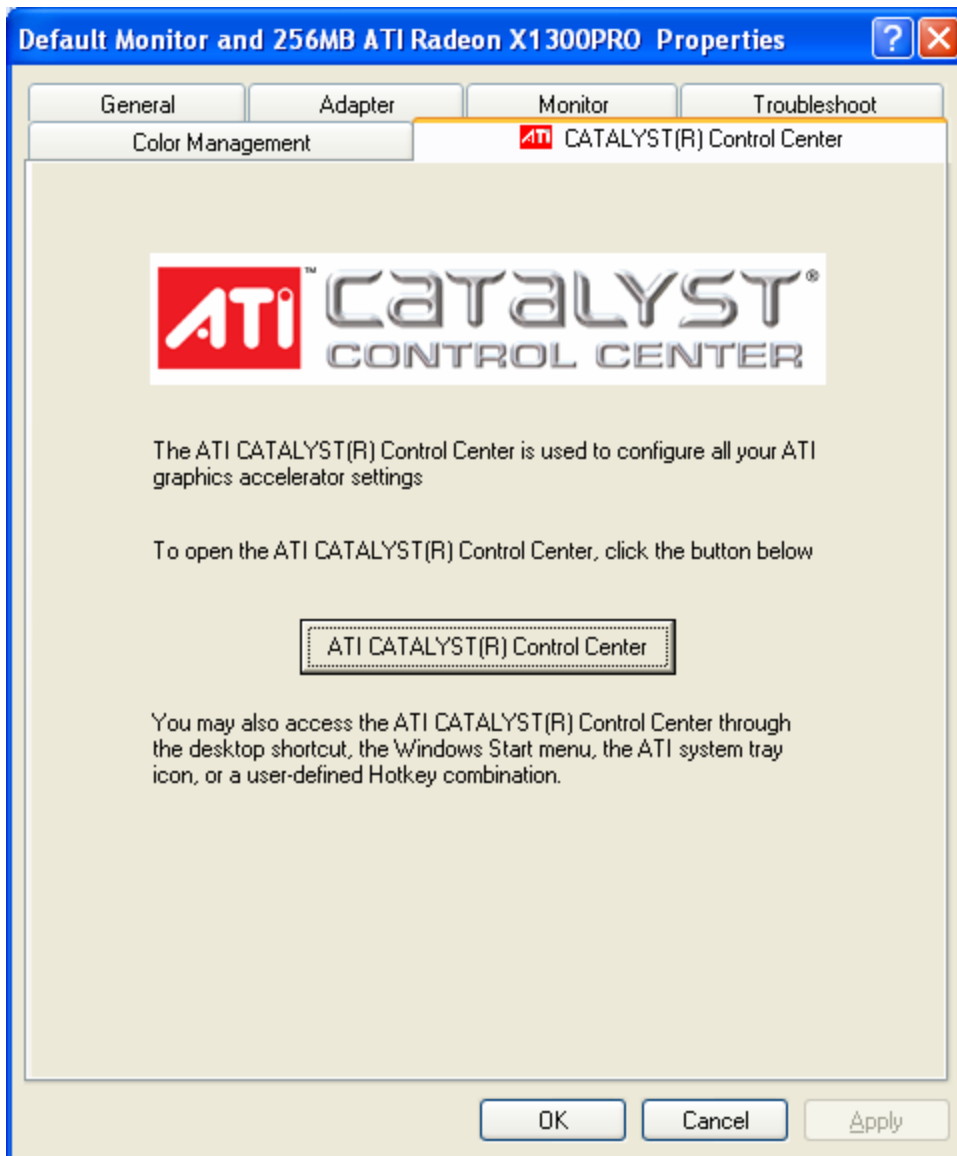
Select the Settings Tab.



Click on the Advanced button.



Click on the CATALYST (R) Control Center Tab.



Click on the ATI CATALYST (R) Control Center button.



Right click on the "2" and click enable. Answer "Yes" if the display is right.



Right click on the monitor icon under "Desktop 2:", select Clone Desktop 1 with monitor. Answer "Yes" if the display is right.



Click OK for all open windows.